



BEAM  
**4.45m**



DRAFT  
**1.14m**



CONSTRUCTION  
**GRP**



MAX SPEED  
**~ 36 knots**



GUESTS  
**4**



CABINS  
**2**

## Description

Princess Melanie is a Princess V52, delivered in 2014 by Princess Yachts. She is presented for sale in immaculate condition with her technical and cosmetic components perfectly maintained and with only 440 engine hours to date. With a wide superstructure hatch and sliding doors, the Princess V52 is suitable for any climate.

Her fresh and contemporary interior is a stunning combination of dark, glossy walnut furnished with light leather materials. She features a great range of equipment, including a hydraulic swim platform for a tender or jet ski, bow and stern thrusters, an aft deck sun awning and a fully equipped wetbar in the cockpit.

## Additional Key Information

<b>Builder</b> Princess Yachts	<b>Flag Registry</b> Jersey
<b>Model</b> Princess V52	<b>Tax Paid</b> No
<b>Private Or Commercial</b> Private	<b>Displacement</b> 20,000
<b>Model Year</b> 2014	<b>Water Capacity</b> 364
<b>Location</b> Marmaris, Turkey	<b>Fuel Capacity</b> 1665
<b>Year Build</b> 2014	

## Engine Information

<b>Manufacturer</b> Twin Volvo	<b>Hours</b> 440
<b>Model</b> D 11- 725HP	

## Power & Drive System

- 4-bladed propellers made of nickel-aluminum bronze	- Waterless shaft seals
- Bow and stern thruster	- Engine room exhaust fan with electronic time setting
- Electronic engine and gearshift control	

## Generator

- 220/240 Volt diesel generator with increased power 11kW in its own soundproof casing with water-cooled exhaust with special noise reduction	- Inlet for shore power in cockpit locker with storage for cable
	- Polarity check system

## Fuel System

- Dual fuel tanks 1665	- Fuel filters
------------------------	----------------

## Electrical Systems 24 Volt

- 4 batteries for starting the engine	- Reversible air conditioner (hot / cold)
- 4 heavy duty auxiliary batteries	- Anti-fogging system for windows in front of the helm station
- LED lighting	

## Bilge Pumps

- Automatic electric bilge pumps	- High performance manual bilge pump with valve
----------------------------------	---

## Water System

- Water heater with a volume of 50	- Water level indicator
------------------------------------	-------------------------

## Firefighting Equipment

- Automatic / manual fire extinguishers in the engine room with manual control	- Hand-held fire extinguishers in cabins, kitchen area and saloon
--	---

## Navigation Equipment

- Double steering seats	trim tabs (with indicator)
- Electric opening window	Raymarine Advanced Navigation Package: Raymarine i70 display (for speed, distance, depth, temperature, etc.), Raymarine p70R autopilot, Raymarine e125 chartplotter with GPS, Raymarine HD color radar with 48 "4Kw structure scanner
- Engine controls: including fuel level indicators, engine control sticks and rudder position indicator	- Remote controlled floodlight
- Navigation system including VHF / RT, depth sounder with warning system and magnetic compass	
- Control system for wipers, bilge pump, anchor winch and	

## Deck Fittings

- Teak bathing platform, cockpit and steps to side decks	- Extended anchor chain (total length 50 meters)
- Hydraulic bathing platform	- Stainless steel mooring cleats and handrails
- Reversible electric anchor winch in the bow of the yacht and Delta anchor 20 kg	- Remote controlled floodlight

## Cockpit

- U-shaped seat with folding teak table (table on telescopic leg with height adjustment)	- Wetbar including sink, refrigerator, storage lockers and ceramic hob
- Instead of the crew cabin, there is a place for storing equipment	- Liferaft storage box
- Shower with hot and cold water on the bathing platform	- Shore power inlet, 240V
	- Locker with remote fuel taps
	- Aft awning

## Main Salon

- Opening doors between cockpit and saloon	- Wooden floor in saloon, kitchen area and main helm area
- U-shaped sofa and dining table	- Metal blinds for all windows
- Chest of drawers with glass and storage space for bottles	- Interior trim in glossy dark walnut
- Electric opening roof	- Leather upholstery of the helm seats
- Stereo radio / MP3 with speakers in saloon and cockpit	- Leather upholstery sofas in the lower and upper salon
- TV with a diagonal of 32" with a system of descent and ascent	

## Lower Deck Lounge

- L-shaped sofa and dining table (table with height adjustment to create an extra bed)	Electrical control panels 24 V and 220/240 V
- 32" LED TV, DVD, Radio / MP3	- Lockers for storing things

## Galley Equipment

- 3-zone ceramic plate	- Fridge-freezer
- Combined microwave / oven	- Garbage container
- Stainless steel sink	- Storage cabinets, drawers and lockers

## Cabins

- Openable portholes in all cabins and bathrooms	- All bathrooms are equipped with showers, electric toilets, extractor hood and 240 V sockets
- All cabins are equipped with 220/240 V sockets	
- Spring mattresses	

## Master Cabin

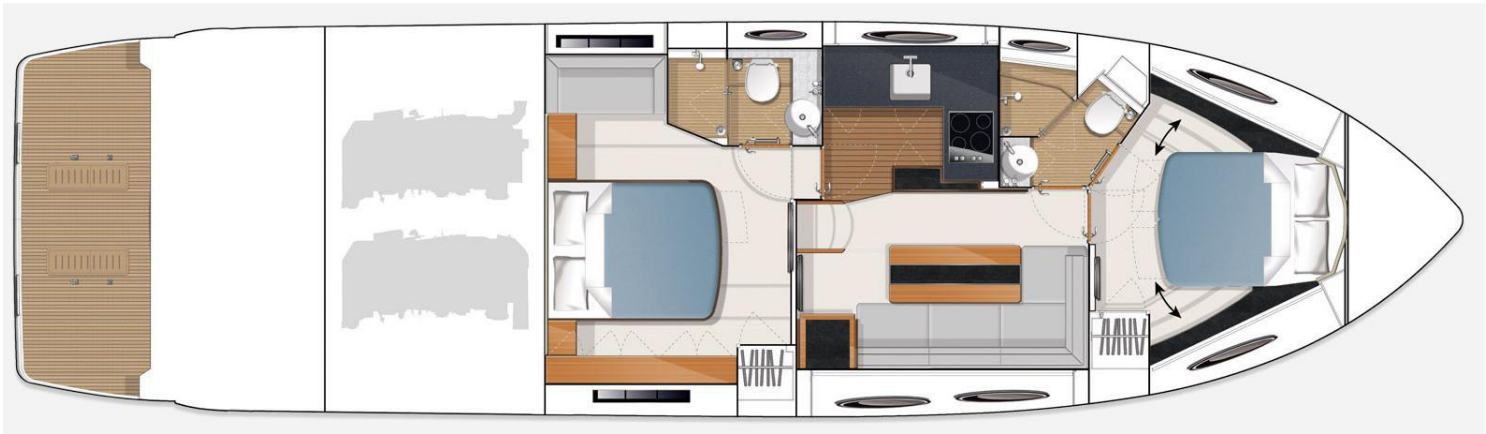
- Large double bed with drawers downstairs	- Overhead and individual bed lighting
- Wardrobe with shelves	- Bathroom
- Sofa on starboard side	- 26" TV
- Lockers and storage boxes.	

## VIP Cabin

- Two single beds with the possibility of combining into a double	- Top hatch with integrated curtain
- Wardrobe	- Overhead and individual bed lighting
- Lockers for storage	- 26" TV

## New for 2021

- Fenders	- Aft canopy in the cockpit from the sun
- First aid kit	- Decorating the seating area in the cockpit with materials from the Movida Metallic Palta Diamante collection
- Manual for use	- New bow sunbeds (May 2021)
- Quilted bedspreads in all cabins	- Battery replacement (4 pcs) (May 2021)
- Mosquito nets	- Extension of the chain up to 90m (June 2021)
- Inverter 24/3500	







outremer

51

































